

# Texas City Y Spill – Spot Weather Forecast

**Forecaster:** Chris McKinney  
**Issue Time:** 08:00 PM CDT – FRI MARCH 28, 2014



Scan the QR Code above with  
your cell phone or tablet to load  
this document.

## Changes since last forecast:

- **Severe Thunderstorm Watch** effective for Galveston/Brazoria counties and Galveston Bay through 10pm
- Storms approaching from north should begin to weaken before arriving at coast.

## Synopsis:

SEVERE THUNDERSTORM WATCH IS IN EFFECT FOR GALVESTON AND BRAZORIA COUNTIES ALONG WITH GALVESTON BAY. STORMS APPROACHING FROM THE NORTH WILL BEGIN TO WEAKEN AS THEY APPROACH THE COAST WITHIN THE NEXT COUPLE OF HOURS. A COLD FRONT WILL MOVE INTO SOUTHEAST TEXAS LATER TONIGHT AND OFFSHORE BEFORE SUNRISE. THIS WILL BRING AN END TO THE SEA FOG ALONG THE COAST AND NEARSHORE WATERS.

## Spot Forecast for latitude 29.33 N and longitude 94.76 W:

THUNDERSTORMS APPROACHING FROM THE NORTH MAY AFFECT UPPER GALVESTON BAY BEFORE 9PM AND COULD EXTEND FURTHER SOUTH TO AFFECT GALVESTON ISLAND. MOST THUNDERSTORMS SHOULD BEGIN TO WEAKEN AS THEY APPROACH THE COAST. A COLD FRONT WILL MOVE OFFSHORE LATER TONIGHT WHICH WILL BRING AN END TO THE SEA FOG AND THUNDERSTORM THREAT. NORTH TO NORTHEAST WINDS AROUND 10-15 KNOTS EXPECTED ON SATURDAY IN THE WAKE OF THE FRONT. ONSHORE WINDS WILL RETURN BY SUNDAY.

.REST OF TONIGHT...

TIME (CDT)	8 PM	10 PM	MIDNGT	2 AM	4 AM
SKY (%)	MCLDY	MCLDY	MCLDY	MCLDY	MCLDY
WEATHER COV	AREAS	ISOLTD	ISOLTD	AREAS	
WEATHER TYPE	FOG	RN/FG	RN/FG	FOG	NONE
TEMP	67	65	65	64	63
RH	93	100	100	100	97
WIND DIR FROM	S	S	S	SW	N
WIND SPEED	5	3	5	6	7
WIND GUST	10				10
RAIN CHANCES	20	20	20	20	20
VISIBILITY	1/2	1/2	1/4	1/4	5
CEILING	200	200	200	200	1500

# Texas City Y Spill – Spot Weather Forecast

.SATURDAY...

TIME (CDT)	6 AM	8 AM	10 AM	NOON	2 PM	4 PM
SKY (%)	MCLDY	PCLDY	PCLDY	MCLEAR	MCLEAR	MCLEAR
WEATHER COV.						
WEATHER TYPE	NONE	NONE	NONE	NONE	NONE	NONE
TEMP.	63	63	67	71	73	74
RH.	93	90	75	63	57	51
WIND DIR FROM	N	N	N	N	N	N
WIND SPEED	12	14	13	12	12	9
WIND GUST	20	25	25	20	20	15
CWR	20	10	10	10	10	10
VISIBILITY	P6SM	P6SM	P6SM	P6SM	P6SM	P6SM
CEILING	1500	25000	25000	25000	CLR	CLR

## NOTES REGARDING FORECAST CONTENT...

1. WIND DIRECTION IS WHERE THE WIND IS COMING FROM...A NE WIND DENOTES A WIND DIRECTION OUT OF THE NORTHEAST.
2. CEILINGS ARE MEASURED ABOVE GROUND (OR WATER) LEVEL.
3. VISIBILITY IS MEASURED IN STATUTE MILES. P6SM DENOTES PAST 6 MILES.

## Aviation Discussion (for Galveston Scholes Field and Palacios)

THUNDERSTORMS APPROACHING FROM THE NORTH WILL BEGIN TO WEAKEN OVER THE NEXT HOUR OR SO AND SHOULD COME TO AN END BY MIDNIGHT. A COLD FRONT WILL MOVE OFFSHORE BEFORE SUNRISE BRINGING AN END TO THE FOG THREAT. IFR CEILINGS ARE EXPECTED THROUGH EARLY MORNING WITH A RAPID IMPROVEMENT TO VFR THROUGH MID MORNING IN THE WAKE OF THE FRONT. LIGHT NORTH TO NORTHEAST WINDS EXPECTED POST FRONT ON SATURDAY.

## Galveston Bay Forecast (wind directions are where the winds are from):

...DENSE FOG ADVISORY IN EFFECT UNTIL 4 AM CDT SATURDAY...  
...SEVERE THUNDERSTORM WATCH 39 IN EFFECT UNTIL 10 PM CDT THIS EVENING...

.REST OF TONIGHT...SOUTHWEST WINDS 5 TO 10 KNOTS BECOMING NORTHWEST AFTER MIDNIGHT. BAY WATERS SMOOTH. AREAS OF DENSE FOG EARLY IN THE EVENING. PATCHY DENSE FOG LATE IN THE EVENING...THEN AREAS OF DENSE FOG AFTER MIDNIGHT. A SLIGHT CHANCE OF SHOWERS.

.SATURDAY...NORTH WINDS 10 TO 15 KNOTS. BAY WATERS SLIGHTLY CHOPPY.

.SATURDAY NIGHT...NORTHEAST WINDS 5 TO 10 KNOTS. BAY WATERS SMOOTH.

.SUNDAY...EAST WINDS 10 TO 15 KNOTS BECOMING SOUTHEAST IN THE AFTERNOON. BAY WATERS SLIGHTLY CHOPPY.

.SUNDAY NIGHT...SOUTHEAST WINDS 10 TO 15 KNOTS. BAY WATERS SLIGHTLY CHOPPY.

.MONDAY...SOUTHEAST WINDS 10 TO 15 KNOTS. BAY WATERS SLIGHTLY CHOPPY.

# **Texas City Y Spill – Spot Weather Forecast**

---

## **Matagorda Bay Forecast:**

...DENSE FOG ADVISORY IN EFFECT UNTIL 4 AM CDT SATURDAY...

.REST OF TONIGHT...SOUTHEAST WINDS 5 TO 10 KNOTS BECOMING NORTH AFTER MIDNIGHT. BAY WATERS SMOOTH. AREAS OF DENSE FOG EARLY IN THE EVENING. PATCHY DENSE FOG LATE IN THE EVENING...THEN AREAS OF DENSE FOG AFTER MIDNIGHT. A SLIGHT CHANCE OF SHOWERS.

.SATURDAY...NORTH WINDS 10 TO 15 KNOTS. BAY WATERS SLIGHTLY CHOPPY.

.SATURDAY NIGHT...EAST WINDS 5 TO 10 KNOTS. BAY WATERS SMOOTH.

.SUNDAY...EAST WINDS 10 TO 15 KNOTS. BAY WATERS SLIGHTLY CHOPPY.

.SUNDAY NIGHT...SOUTHEAST WINDS 10 TO 15 KNOTS. BAY WATERS SLIGHTLY CHOPPY.

.MONDAY...SOUTHEAST WINDS 10 TO 15 KNOTS. BAY WATERS SLIGHTLY CHOPPY.

## **Gulf of Mexico Coastal Water Forecast for 0 to 20 nm from High Island to Freeport:**

...DENSE FOG ADVISORY IN EFFECT UNTIL 4 AM CDT SATURDAY...

...SEVERE THUNDERSTORM WATCH 39 IN EFFECT UNTIL 10 PM CDT THIS EVENING...

...SMALL CRAFT SHOULD EXERCISE CAUTION...

.REST OF TONIGHT...SOUTHWEST WINDS 5 TO 10 KNOTS BECOMING WEST AFTER MIDNIGHT. SEAS 2 TO 3 FEET. AREAS OF DENSE FOG EARLY IN THE EVENING. PATCHY DENSE FOG LATE IN THE EVENING. AREAS OF DENSE FOG AFTER MIDNIGHT. A SLIGHT CHANCE OF SHOWERS. A SLIGHT CHANCE OF THUNDERSTORMS AFTER MIDNIGHT.

.SATURDAY...NORTH WINDS 10 TO 15 KNOTS. SEAS 2 TO 4 FEET.

.SATURDAY NIGHT...NORTHEAST WINDS 10 TO 15 KNOTS. SEAS 2 TO 3 FEET.

.SUNDAY...EAST WINDS 10 TO 15 KNOTS. SEAS 2 TO 3 FEET.

.SUNDAY NIGHT...SOUTHEAST WINDS 10 TO 15 KNOTS. SEAS 2 TO 3 FEET.

.MONDAY...SOUTHEAST WINDS 10 TO 15 KNOTS. SEAS 1 TO 2 FEET.

# Texas City Y Spill – Spot Weather Forecast

## Gulf of Mexico Coastal Water Forecast for 0 to 20 nm from to Freeport to the Matagorda Ship Channel:

...DENSE FOG ADVISORY IN EFFECT UNTIL 4 AM CDT SATURDAY...

...SMALL CRAFT SHOULD EXERCISE CAUTION...

.REST OF TONIGHT...SOUTH WINDS 5 TO 10 KNOTS BECOMING NORTHWEST 10 TO 15 KNOTS AFTER MIDNIGHT. SEAS 2 TO 4 FEET. AREAS OF DENSE FOG EARLY IN THE EVENING. PATCHY DENSE FOG LATE IN THE EVENING... THEN AREAS OF DENSE FOG AFTER MIDNIGHT. A SLIGHT CHANCE OF SHOWERS. A SLIGHT CHANCE OF THUNDERSTORMS AFTER MIDNIGHT.

.SATURDAY...NORTH WINDS 15 TO 20 KNOTS BECOMING NORTHEAST 10 TO 15 KNOTS IN THE AFTERNOON. SEAS 2 TO 4 FEET.

.SATURDAY NIGHT...NORTHEAST WINDS 5 TO 10 KNOTS BECOMING EAST 10 TO 15 KNOTS AFTER MIDNIGHT. SEAS 2 TO 4 FEET.

.SUNDAY...EAST WINDS 10 TO 15 KNOTS. SEAS 2 TO 3 FEET.

.SUNDAY NIGHT...SOUTHEAST WINDS AROUND 15 KNOTS. SEAS 2 TO 3 FEET.

.MONDAY...SOUTHEAST WINDS 10 TO 15 KNOTS. SEAS 2 TO 3 FEET.

### Extended Forecast Highlights:

- East winds becoming southeasterly Monday.
- Tide levels rising to slightly above normal.
- Rain chances return late Tuesday.

### Tides:

TIDE LEVELS AROUND 1 FOOT ABOVE NORMAL THIS MORNING WILL REMAIN ELEVATED THROUGH THE AFTERNOON THEN SLOWLY RETURN TO NEAR NORMAL BY SATURDAY MORNING AS A COLD FRONT MOVES OFF THE COAST.

.THE TIDE FORECAST WITH HIGH AND LOW TIDE TIMES...

NOTE...TIDE LEVELS ARE REFERENCED FROM MEAN LOWER LOW WATER.

LOCATION	TIDE TIMES	EXPECTED WATER LEVEL	TIDE TYPE
MORGANS POINT...			
	FRI 6:30 AM	2.1 FEET	HIGH TIDE
	FRI 1:45 PM	1.2 FEET	LOW TIDE
	FRI 8:46 PM	2.1 FEET	HIGH TIDE
	SAT 2:18 AM	1.0 FEET	LOW TIDE
	SAT 8:04 AM	1.5 FEET	HIGH TIDE
	SAT 2:39 PM	0.7 FEET	LOW TIDE
	SAT 8:47 PM	1.4 FEET	HIGH TIDE
MANCHESTER...			
	FRI 7:43 AM	2.4 FEET	HIGH TIDE
	FRI 2:37 PM	1.5 FEET	LOW TIDE
	FRI 9:06 PM	2.5 FEET	HIGH TIDE

# Texas City Y Spill – Spot Weather Forecast

---

SAT	3:08 AM	1.1 FEET	LOW TIDE
SAT	8:57 AM	1.9 FEET	HIGH TIDE
SAT	3:32 PM	0.9 FEET	LOW TIDE
SAT	9:27 PM	1.8 FEET	HIGH TIDE

## ROLLOVER PASS...

FRI	5:12 AM	2.0 FEET	HIGH TIDE
FRI	12:52 PM	1.0 FEET	LOW TIDE
FRI	6:54 PM	1.7 FEET	HIGH TIDE
SAT	12:36 AM	0.8 FEET	LOW TIDE
SAT	6:22 AM	1.5 FEET	HIGH TIDE
SAT	1:43 PM	0.5 FEET	LOW TIDE
SAT	7:03 PM	1.1 FEET	HIGH TIDE

## EAGLE POINT...

FRI	4:39 AM	1.9 FEET	HIGH TIDE
FRI	12:16 PM	1.3 FEET	LOW TIDE
FRI	7:19 PM	1.9 FEET	HIGH TIDE
SAT	12:42 AM	0.9 FEET	LOW TIDE
SAT	6:35 AM	1.2 FEET	HIGH TIDE
SAT	1:10 PM	0.8 FEET	LOW TIDE
SAT	7:07 PM	1.1 FEET	HIGH TIDE

## GALVESTON CHANNEL (PIER 21)...

FRI	9:21 AM	1.0 FEET	LOW TIDE
FRI	3:50 PM	2.0 FEET	HIGH TIDE
FRI	9:32 PM	1.4 FEET	LOW TIDE
SAT	3:44 AM	1.6 FEET	HIGH TIDE
SAT	10:16 AM	0.6 FEET	LOW TIDE
SAT	4:17 PM	1.4 FEET	HIGH TIDE
SAT	10:14 PM	0.6 FEET	LOW TIDE

## GALVESTON BAY ENTRANCE...

FRI	8:30 AM	1.3 FEET	LOW TIDE
FRI	3:27 PM	2.6 FEET	HIGH TIDE
FRI	8:59 PM	1.6 FEET	LOW TIDE
SAT	3:44 AM	1.8 FEET	HIGH TIDE
SAT	9:35 AM	0.6 FEET	LOW TIDE
SAT	4:02 PM	1.7 FEET	HIGH TIDE
SAT	9:52 PM	0.4 FEET	LOW TIDE

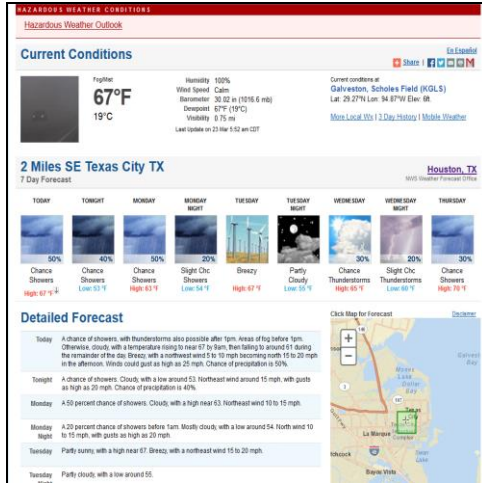
## FREEPORT USCG...

FRI	8:49 AM	1.2 FEET	LOW TIDE
FRI	3:02 PM	2.4 FEET	HIGH TIDE
FRI	9:09 PM	1.7 FEET	LOW TIDE
SAT	2:52 AM	1.6 FEET	HIGH TIDE
SAT	9:53 AM	0.5 FEET	LOW TIDE
SAT	3:29 PM	1.4 FEET	HIGH TIDE
SAT	9:32 PM	0.6 FEET	LOW TIDE

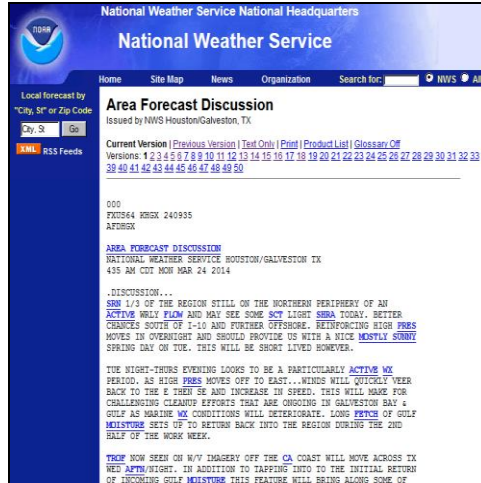


# Texas City Y Spill – Spot Weather Forecast

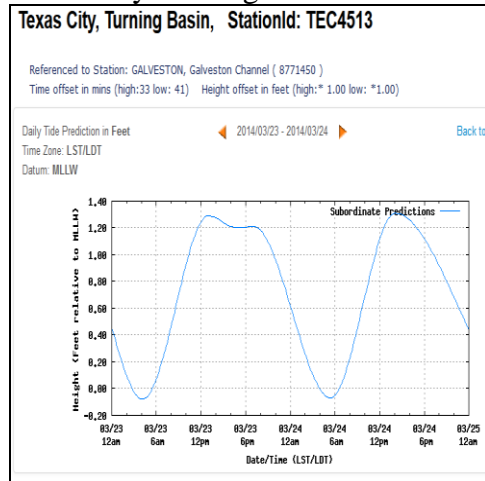
## General Texas City Forecast (clickable)



## Forecast Discussion & Reasoning (clickable)



## Texas City Turning Basin Tides



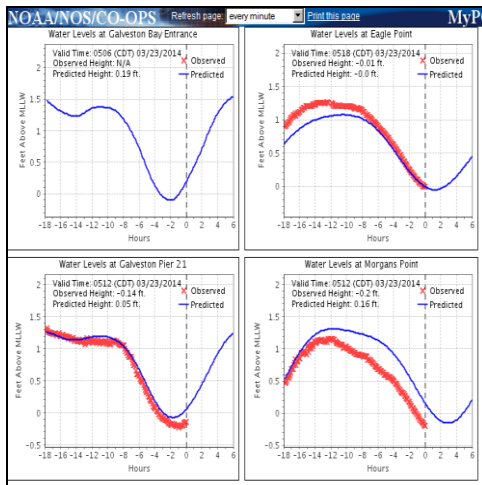
## Other Tide Locations

Galveston Bay
PORT BOLIVAR
Texas City, Turning Basin
EAGLE POINT
CLEAR LAKE
MORGANS POINT
LYNCHBURG LANDING
MANCHESTER
ROUND POINT
UMBRELLA POINT, TRINITY BAY
Point Barrow, Trinity Bay
ROLLOVER PASS
HIGH ISLAND
Gilchrist, East Bay
Jamaica Beach, West Bay
Christmas Bay
SAN LUIS PASS
GALVESTON PLEASURE PIER

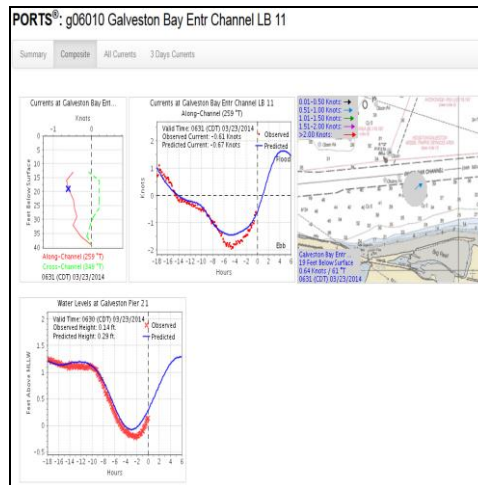
# Texas City Y Spill – Spot Weather Forecast

## Water Levels & Currents (clickable):

### PORTS water levels



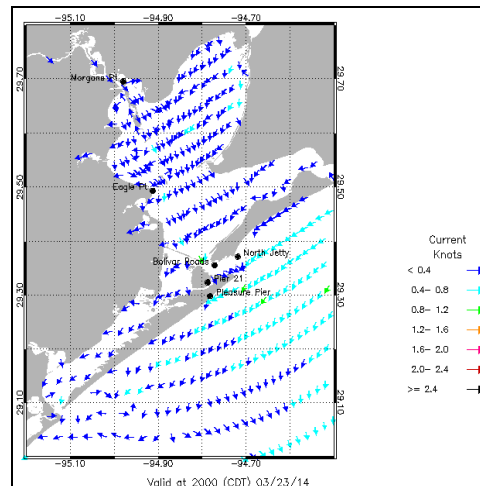
### PORTS currents



### Other Galveston Bay Currents

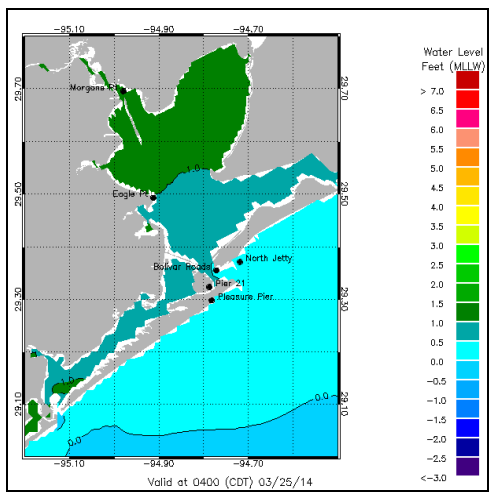
GALVESTON BAY	
Bolivar Roads (Depth 8ft)	
Bolivar Roads (Depth 14ft)	
Bolivar Roads (Depth 31ft)	
Galveston Channel, west end	
Galveston Causeway RR. bridge (Depth 16ft)	
Houston Channel, W of Port Bolivar (Depth 3ft)	
Houston Channel, W of Port Bolivar (Depth 14ft)	
Houston Channel, W of Port Bolivar (Depth 26ft)	
Houston Ship Channel (Red Fish Bar) (Depth 7ft)	
Houston Ship Channel (Red Fish Bar) (Depth 14ft)	
Houston Ship Channel (Red Fish Bar) (Depth 24ft)	
Morgans Point (Depth 6ft)	
Morgans Point (Depth 15ft)	
Morgans Point (Depth 25ft)	

### Current Forecast Model

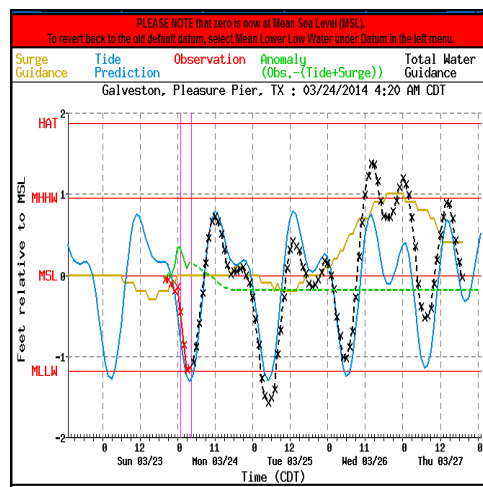


# Texas City Y Spill – Spot Weather Forecast

## Water Level Forecast Model

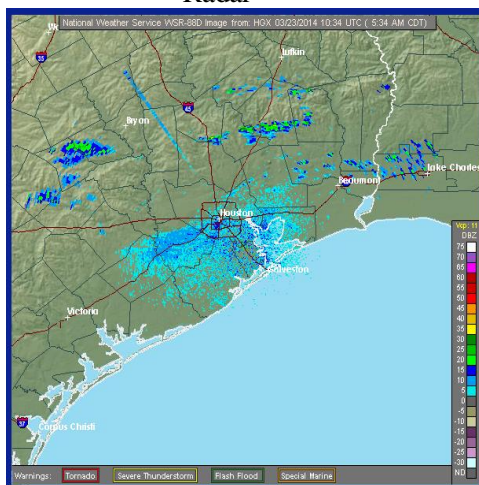


## Beachfront Water Level Fcst Model

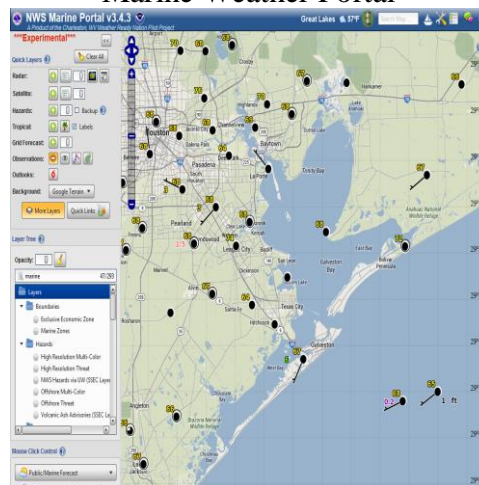


## Other helpful links (clickable):

### Radar

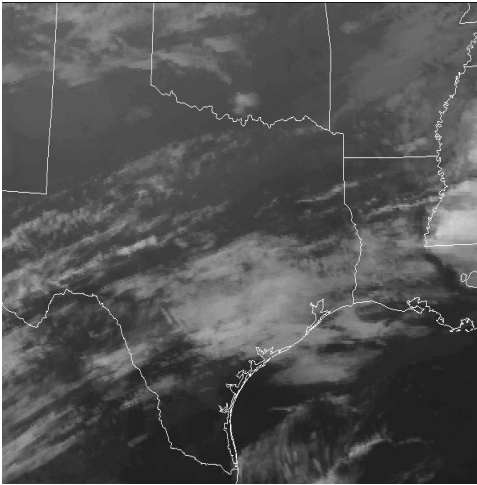


### Marine Weather Portal



# Texas City Y Spill – Spot Weather Forecast

Satellite



Wave Height Model

